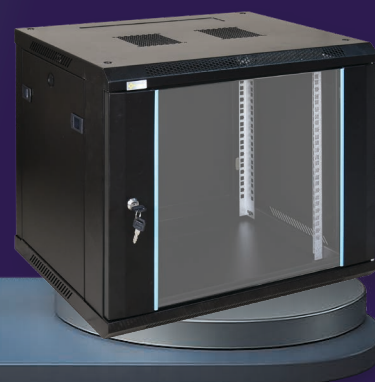


Comparison of wall - mounted 19" RACK cabinet series



VS



BASIC

Series: RWA...-G / -B (ready-to-assemble)
RW...-G / -B (fully assembled)

INDUSTRIAL

Series: RWA... (ready-to-assemble)
RW... (fully assembled)

Price / quality:

COST-EFFECTIVE

for basic LAN / CCTV / SSWiN / KD solutions installed in:

- single-family homes
- small / medium-sized companies



PROFESSIONAL

for basic LAN / CCTV / SSWiN / KD solutions installed in:

- public buildings
- production halls
- small server rooms



Load capacity:

up to 30kg / 50kg

sufficient for standard solutions, ideal for mounting lightweight network devices:

- PoE switches
- patch panels
- routers



up to 70kg

suitable for heavier devices, designed for mounting heavier components:

- UPS power supplies
- small servers
- recorders with multiple drives



Colour:

black / grey



black



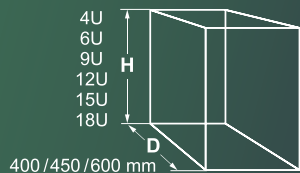
Available models:

height:

4U / 6U / 9U / 12U / 15U / 18U

depth:

400 / 450 / 600 mm

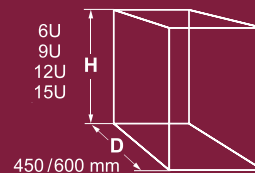


height:

6U / 9U / 12U / 15U

depth:

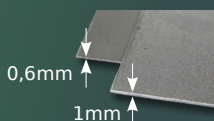
450 / 600 mm



Sheet thickness:

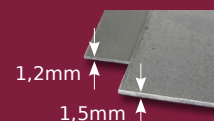
0,6 / 1,0 mm

a compromise between price, weight and rigidity of the cabinet structure



1,2 / 1,5 mm

to maintain maximum rigidity and mechanical resistance



Side door:

Click closing

no option to install a side lock



Click closing

option to install a RAZB16 side lock
- additional accessory

