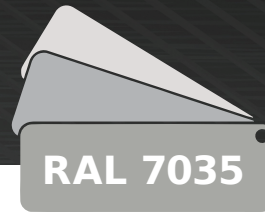


HANGING RACK CABINETS – GRAY

4U / 6U / 9U / 12U / 15U / 18U



Available series:

- RWA...-G - ready to assemble (12 models)
- RW...-G - fully assembled (3 models)
- RWDA...-G - two-section, fully assembled (6 models)
- RK...-G - vandal-resistant, welded (5 models)

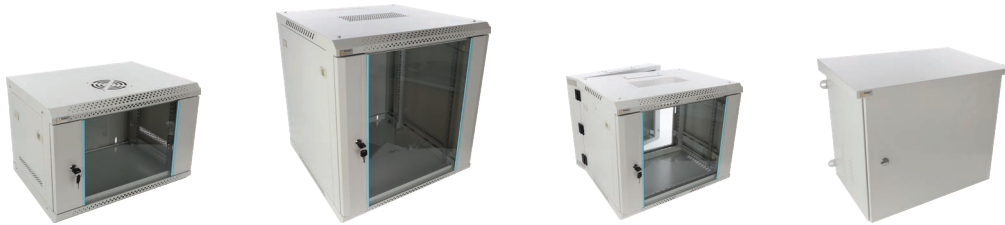
ADDITIONAL MATERIALS:



360° product images



Files for designers



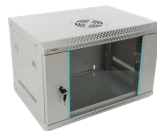
RWA...-G series (540x400)
ready-to-assemble

Code	Height	Dimensions
RWA454-G	4U	540x280x400
RWA654-G	6U	540x368x400
RWA954-G	9U	540x501x400



RW...-G series (540x400)
(assembled RWA...-G Series)

Code	Height	Dimensions
RW454-G	4U	540x280x400
RW654-G	6U	540x368x400
RW954-G	9U	540x501x400



RWA...-G series (600x450/600x600)
ready-to-assemble

Code	Height	Dimensions
RWA1264-G	12U	600x635x450
RWA1564-G	15U	600x769x450
RWA1864-G	18U	600x901x450
RWA466-G	4U	600x280x600
RWA666-G	6U	600x368x600
RWA966-G	9U	600x501x600
RWA1266-G	12U	600x635x600
RWA1566-G	15U	600x769x600
RWA1866-G	18U	600x901x600



Possibility of assembling wheels



RWDA...-G series (600x550)
ready-to-assemble - two-section

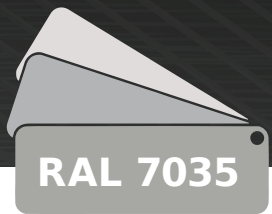
Code	Height	Dimensions
RWDA465-G	4U	600x280x550
RWDA665-G	6U	600x368x550
RWDA965-G	9U	600x501x550
RWDA1265-G	12U	600x635x550
RWDA1565-G	15U	600x769x550
RWDA1865-G	18U	600x901x550



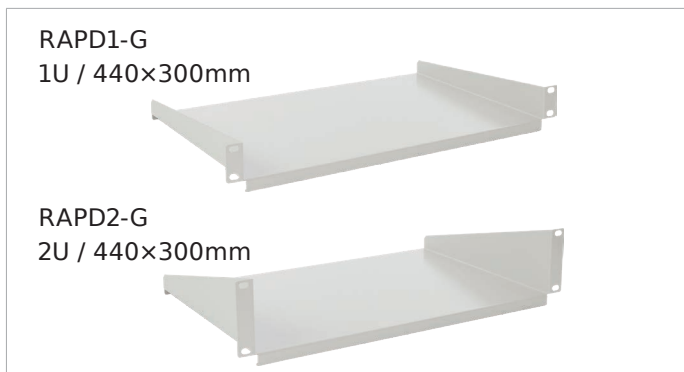
RK...-G series (600x400)
vandal-resistant (welded)

Code	Height	Dimensions additional protective inclined top panel with height of 48 mm
RK464-G	4U	600x277x400
RK664-G	6U	600x367x400
RK964-G	9U	600x500x400
RK1264-G	12U	600x633x400
RK1564-G	15U	600x767x400





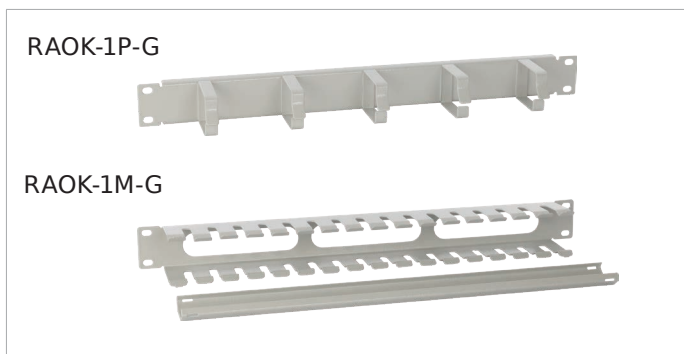
Shelves



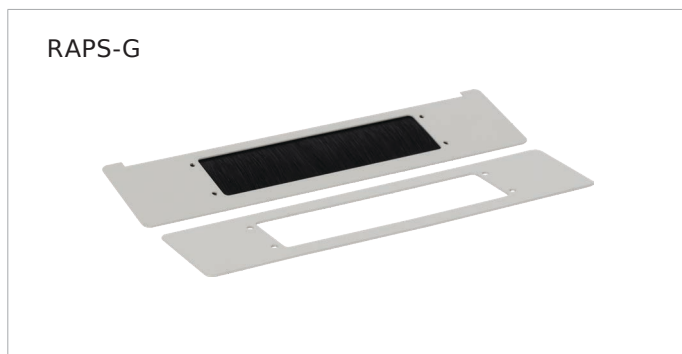
Blanking panels



Management panels



Brush grommet



Locks



Wheels - for RWA...-G series cabinets (600×450/600×600)



Use RACK configurator CONFI-RACK[®]

RACK cabinets:

- wall mounted
- double section, wall mounted
- hanging vandal-resistant
- floor standing cabinets
- optional:
fully assembled / ready-to-assemble
- colour: black / gray

Accessories:

- PoE switches
- universal enclosures for RACK cabinets
- enclosures with DIN rails
- Security enclosures
- fans and thermostats
- management panels, other

