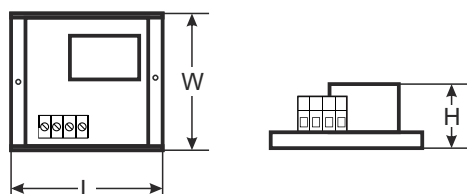
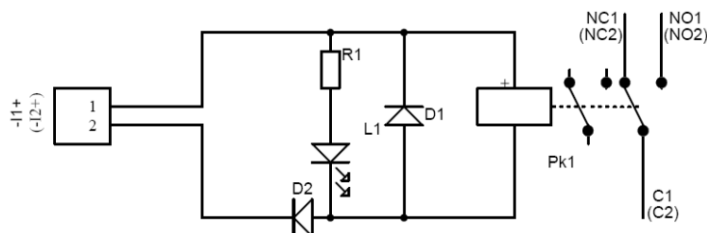
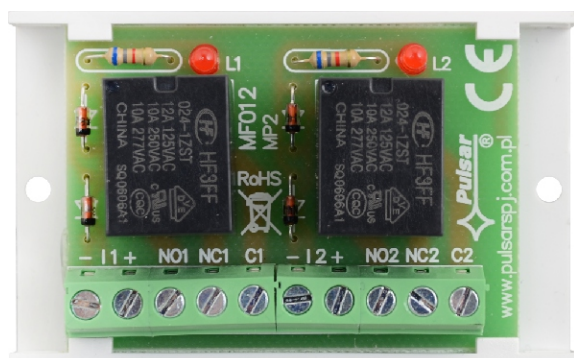


CODE: **AWZ 624** v.1.0/III
NAME: **MP-2/24V relay module**

EN



DESCRIPTION

The MP-2/24V (AWZ624) relay module is to be used in low-voltage installations. It is intended for controlling and status indication in e.g. alarm or access control systems. It may be used to control devices of high power consumption via OC outputs of alarm systems. Moreover, it ensures galvanic isolation of signals, power sources relating to the outputs of the module.

SPECIFICATIONS	
Voltage of the relay's coil	20 ÷ 28 V DC (-/+5%),
Current of the relay's coil	18 mA@ 24 V DC
Number of relays	2
Voltage of the relay's contacts	30 V DC / 48 V AC
Current of the relay's contacts	2 A max.
Contacts of relay	C/NC/NO (leads Φ 2,05 mm: AWG 24-12)
ON/OFF time	15ms/8ms (-/+5%)
Operating temperature	-10°C ÷ +40°C
Enclosure	open-frame design, IP00
Dimensions	L=70, W=43, H=22 [mm, +/-2]
Net/gross weight	0,04 / 0,06 [kg]
Installation	installation tape or installation bolt x 2
Declarations, warranty	CE, 2 years from production date
Notes	leads on connections: Φ 0,41 ÷ 1,63 (AWG 26-14), Φ 0,51 ÷ 2,05 (AWG 24-12) - relay contacts