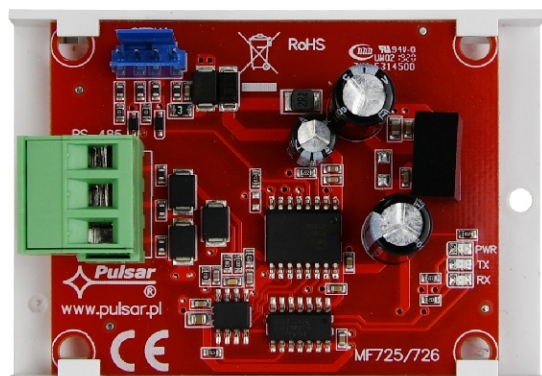


CODE: **INTR-C** v.1.0/III
 TYPE: **Interface RS485-TTL**

EN



Features:

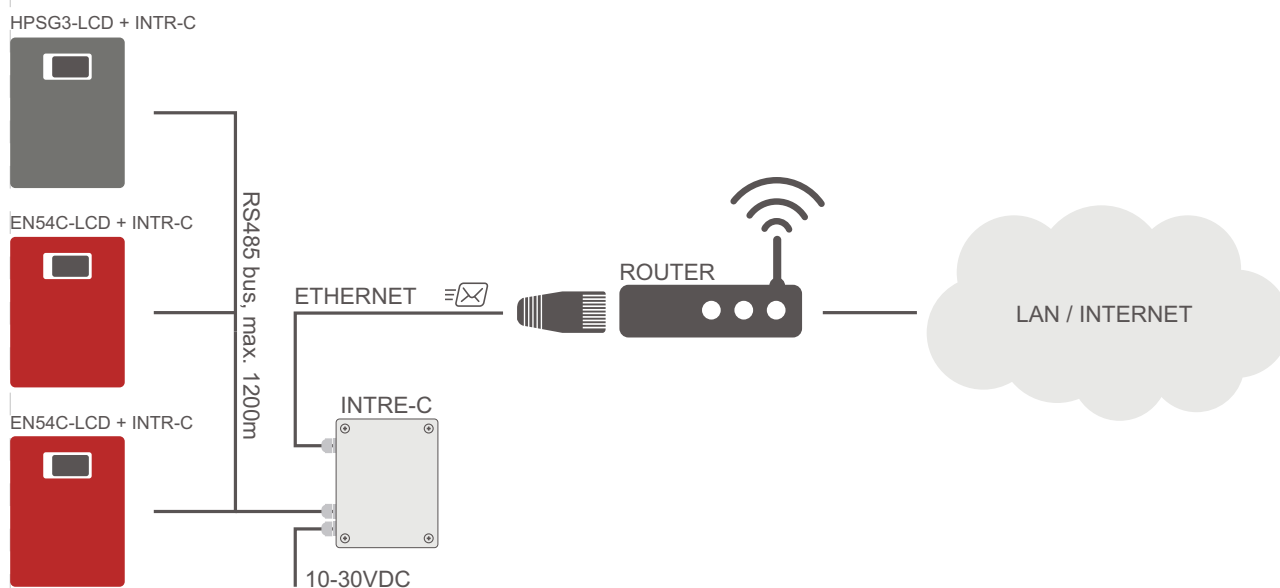
- power supply via „SERIAL” socket
- permission of Scientific and Research Centre for Fire Protection - National Research Institute for use with power supplies of EN54C-LCD series
- cooperation with power supply units of EN54C-LCD and HPSG3-LCD series
- connection of PSU with the RS485 bus
- a possibility of connection of up to 247 interfaces to a RS485 bus
- communication speed up to 115200 bauds
- galvanic isolation
- half-duplex communication system
- cooperation with the PowerSecurity web application
- optical indication
- warranty: 3 years from production date

DESCRIPTION

The RS485-TTL „INTR-C” interface is intended for cooperation with PSUs of the EN54C-LCD and HPSG3-LCD series. Interface enables connecting of PSU to RS485 bus remaining galvanic isolation. Communication in RS485 bus is due to a two-way channel, differential in a half-duplex system where transmitting and receiving data is alternate.

Power supply	3,3 V power through SERIAL outlet
Power consumption	0,15 W
RS485 transmission's speed	Max. 115200 bauds, with parity check
Galvanic isolation between RS485 and TTL interface	1 kV(DC), 700 V(AC)
Optical indication	PWR – supply voltage indication (red LED) TX – data transmission (yellow LED) RX – receiving data (green LED)
Operating conditions	humidity -10°C ÷ +40°C relative humidity 20%...90%
Dimensions (LxWxH)	63 x 50 x 20 [mm]
Net / gross weight	0,03 / 0,09 [kg]
Storage temperature	-20°C...+60°C
Other	Permission of Scientific and Research Centre for Fire Protection - National Research Institute for use with power supplies of EN54C-LCD series

The block diagram of the power supplies with RS485-TTL interface connected to the RS485 bus.



The diagram above shows PSUs connected to a RS485 bus ending with an INTRE-C Ethernet interface. Up to 247 INTR-C interfaces may be connected to a single RS485 bus.