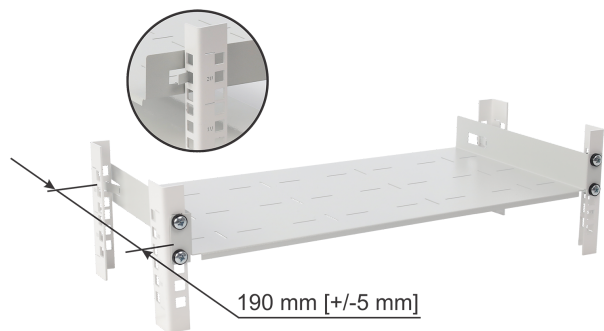
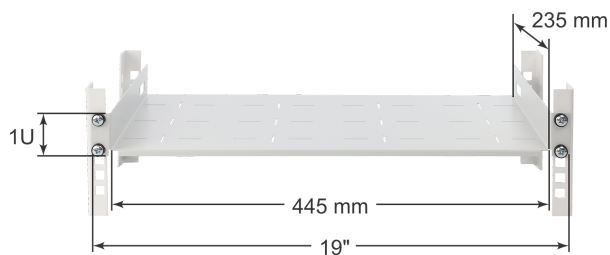
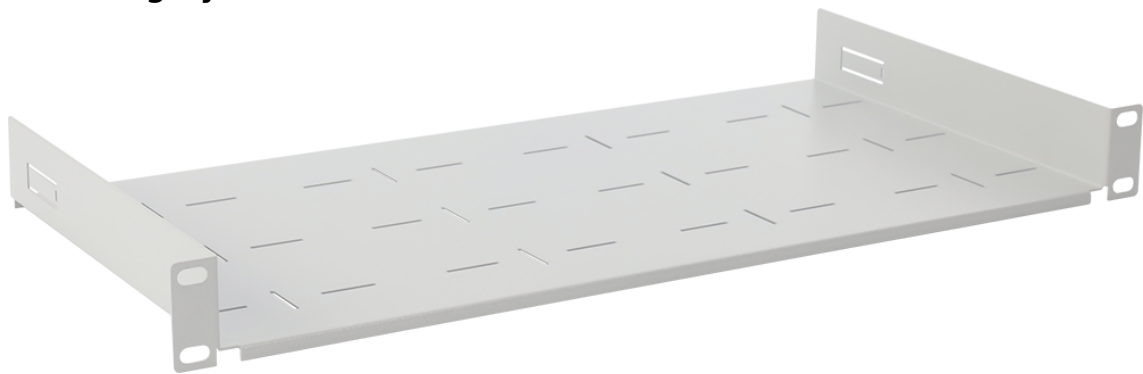


Code: **RAPD-1U235-G** v.1.0 / I

Name: **1U depth shelf with foldable side support for RACK 19" cabinets, 445×235, grey**

EN



## DESTINATION

1U depth shelf with rear support, designed for 19" RACK cabinets where the distance between the RACK profiles (front-to-rear) is 190mm +/-5mm. The shelf can also be used as a standard depth shelf (without utilizing the rear supports).

## TECHNICAL DATA:

<b>Mounting dimensions:</b>	19" x 1U x 190 mm flush mounting with rear support, 4 M6 screws + cage nuts included
<b>Dimensions:</b>	485 x 44.4 x 235 [mm, +/-2]
<b>Shelf:</b>	445 x 235 [mm, +/-2]
<b>Material:</b>	electrolytic galvanized steel sheet DC01, 1mm, RAL7035 (grey), metallic
<b>Static load:</b>	20 [kg]
<b>Weight:</b>	1 / 1.2 [kg]
<b>Warranty:</b>	2 years

