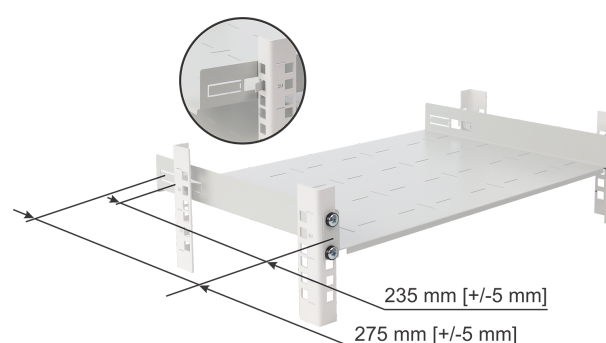
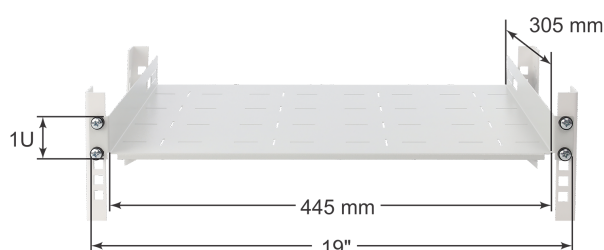
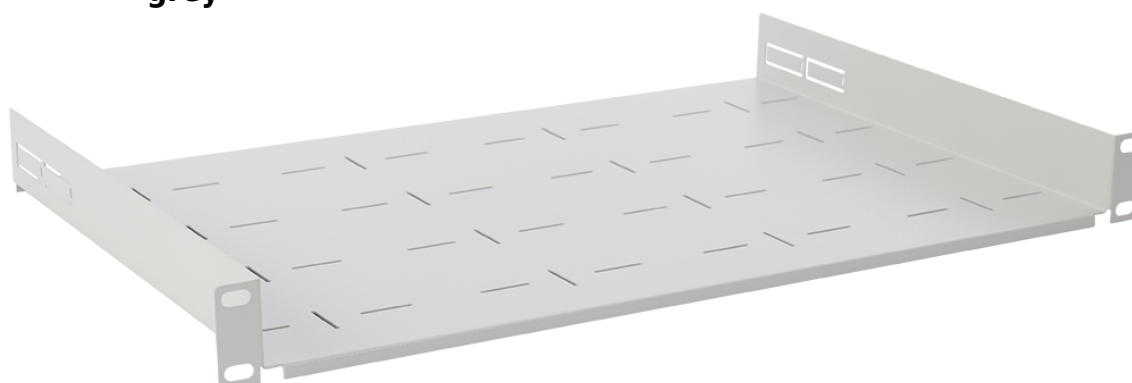


Code: **RAPD-1U305-G** v.1.0 / I

Name: **1U depth shelf with foldable side support for RACK 19" cabinets, 445×305, grey**

EN



DESTINATION

1U depth shelf with rear support, designed for 19" RACK cabinets where the distance between the RACK profiles (front-to-rear) is 235mm +/-5mm or 275mm +/-5mm. The shelf can also be used as a standard depth shelf (without utilizing the rear supports).

TECHNICAL DATA:

Mounting dimensions:	19" x 1U x 235 / 275 mm flush mounting with rear support, 4 M6 screws + cage nuts included
Dimensions:	485 x 44.4 x 305 [mm, +/-2]
Shelf:	445 x 305 [mm, +/-2]
Material:	electrolytic galvanized steel sheet DC01, 1mm, RAL7035 (grey), metallic
Static load:	20 [kg]
Weight:	1.3 / 1.5 [kg]
Warranty:	2 years