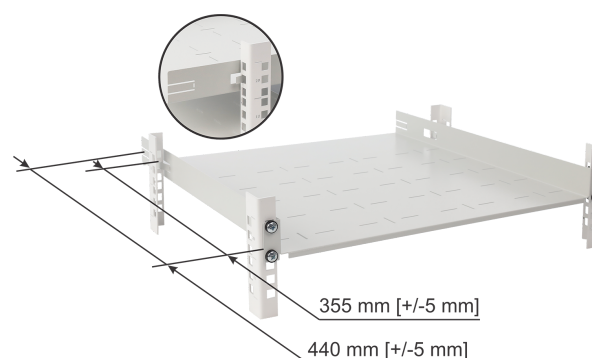
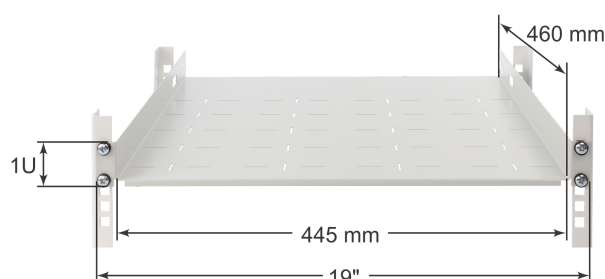
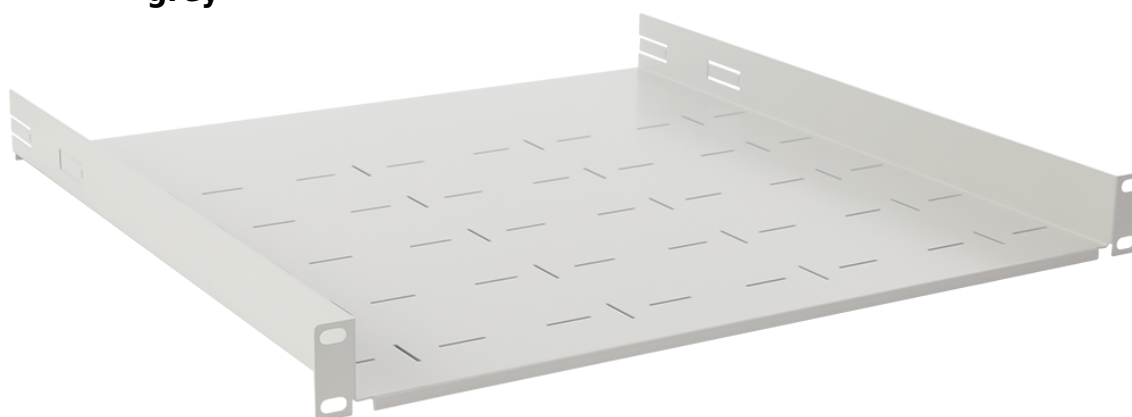


Code: **RAPD-1U460-G** v.1.0 / I

Name: **1U depth shelf with foldable side support for RACK 19" cabinets, 445×460, grey**

EN



DESTINATION

1U depth shelf with rear support, designed for 19" RACK cabinets where the distance between the RACK profiles (front-to-rear) is 355mm +/-5mm or 440mm +/-5mm.

TECHNICAL DATA:

Mounting dimensions:	19" x 1U x 355 / 440 mm flush mounting with rear support, 4 M6 screws + cage nuts included
Dimensions:	485 x 44.4 x 460 [mm, +/-2]
Shelf:	445 x 460 [mm, +/-2]
Material:	electrolytic galvanized steel sheet DC01, 1mm, RAL7035 (grey), metallic
Static load:	20 [kg]
Weight:	2 / 2.2 [kg]
Warranty:	2 years