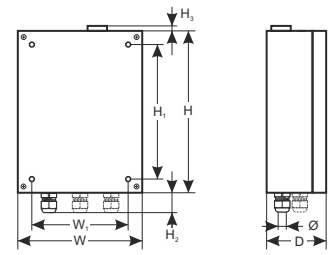
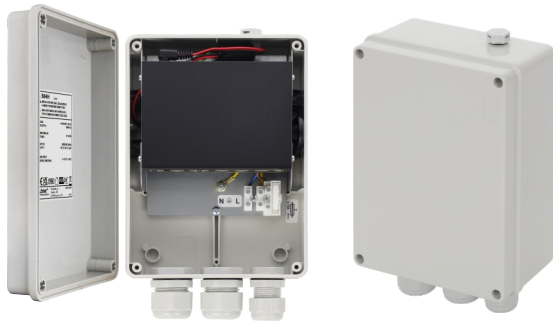


S64H 6-port switch with power supply for 4 IP cameras in hermetic enclosure

CODE: **S64H** v1.4/VII
NAME: **S64H 6-port switch with power supply for 4 IP cameras in hermetic enclosure**

EN



Features:

- Switch 6 ports
4 PoE ports 10/100 Mb/s (data transfer and power supply)
2 ports 10/100 Mb/s (UpLink)
- 30 W for each PoE port, supports devices complaint with the IEEE802.3af/at (PoE+) standard
- Supports auto-learning and auto-aging of MAC addresses (1K size)
- Pole mounting option (requires OZB2 adapter - optional accessory)
- Built-in switch mode power supply PSCL520115 52 V DC/1,15 A/60 W
- Protections:
 - SCP short circuit protection
 - OLP overload protection
 - surge protection (AC input)
- Optical indication
- Warranty – 2 years

DESCRIPTION

S64H is a 6-ports PoE switch designed to supply IP cameras operating in IEEE 802.3af/at standard. Automatic detection of any devices powered in the PoE/PoE+ standard is enabled at the 1 – 4 ports of the switch. The UpLink ports is used for connection of another network device via RJ45 connector. The LEDs at the front panel indicate the operation status (description in the table below).

The PoE technology ensures a network connection and reduces installation costs by eliminating the need to supply a separate power cable for each device. This method allows supplying other network devices, such as IP phone, wireless access point or router.

SPECIFICATIONS

Ports	6 ports 10/100 Mb/s (4 x PoE + 2 x UpLink) with auto negotiation of connection speed, auto MDI/MDIX crossover
PoE supply	IEEE 802.3af/at (1+4 ports), 52 V DC / 30 W at each port *
Protocols and standards	IEEE802.3, 802.3u, 802.3x CSMA/CD, TCP/IP
Capacity	1,6 Gb/s
Transmission method	Store-and-Forward
LED operation indication	Switch supplying; Link/Act; PoE Status
Short circuit protection (SCP)	electronic, automatic recovery
Overload protection (OLP)	150% - 200% PSU power, automatically recovered
Power supply	~100 – 240 V; 50/60 Hz; 0,6 A power supply desktop type PSCL520115 52 V DC / 1,15 A/60 W max.
Fuse F _{MAINS}	T3,15A/250V
Operating conditions	Temperature: -10°C ÷ +40°C, relative humidity 20%...90%, without condensation
External dimensions	W=146, H=196, D=78 [+/- 2 mm]
Mounting dimensions	W ₁ =105, H ₁ =155 [+/- 2 mm]
Cable gland height	H ₂ =35 mm
Dimensions of pressure compensator	H ₃ =9 [mm]
Enclosure	ABS, light grey
Net/gross weight	1,3 / 1,4 [kg]
Protection class EN 62368-1	I first
Protection grade EN 60529	IP56
Storage temperature	-25°C...+60°C
Declarations, warranty	CE, 2 years
Notes	Possibility of pole mounting (requires the OZB2 adapter - optional accessory) PSCL520115 power supply desktop type 52 V DC/1,15 A/60 W max. a set includes

* Given value of 30 W per port is the maximum value. The total power consumption should not exceed 30 W.

Example of installation

