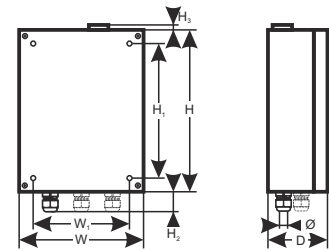
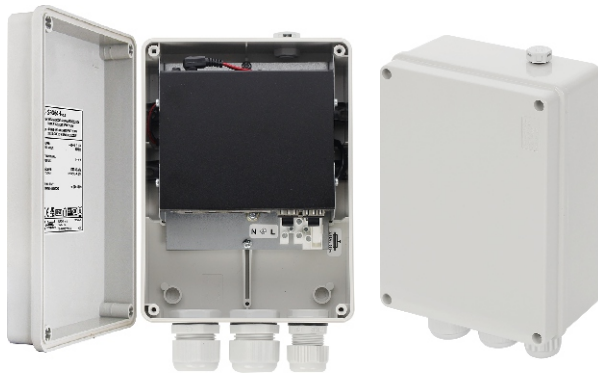


**CODE: SFG64H v1.1/II**  
**NAME: SFG64H 6-port switch with power supply for 4 IP cameras  
in hermetic enclosure**

**EN**



**Cechy:**

- 6 ports switch
- 4 PoE ports 10/100/1000 Mb/s (data transfer and power supply)
- 2 ports 10/100/1000 Mb/s (UpLink)
- 30 W for each PoE port, supports devices compliant with the IEEE802.3af/at (PoE+) standard
- Supports auto-learning and auto-aging of MAC addresses (2K size)
- Possibility of pole mounting (requires the OZB2 adapter - optional accessory)
- PSCL520115 power supply desktop type 52 V DC/1,15 A/60 W max. a set includes
- LED indication
- Warranty – 1 year from production date

**DESCRIPTION**

SFG64H is a 6-ports PoE switch designed to supply IP cameras operating in IEEE 802.3af/at standard. Automatic detection of any devices powered in the PoE/PoE+ standard is enabled at the 1 – 4 ports of the switch. The UP LINK (G1 and G2) ports is used for connection of another network device via of fiber optic (shall be used GBIC). The LEDs at the front panel indicate the operation status (description in the table below).

PoE technology ensures a network connection and reduces installation costs by eliminating the need to supply a separate power cable for each device. This method allows supplying other network devices, such as IP phone, wireless access point or router.

**SPECIFICATIONS**

<b>Ports</b>	4 x PoE 10/100/1000 Mb/s (RJ-45) 2 x UP LINK 1000 Mb/s (SFP) with auto negotiation of connection speed, auto MDI/MDIX crossover
<b>PoE supply</b>	IEEE 802.3af/at (1+4 ports), 52 V DC / 30 W at each port *
<b>Protocols and standards</b>	IEEE802.3, 802.3u, 802.3x CSMA/CD, TCP/IP
<b>Capacity</b>	12 Gb/s
<b>Transmission method</b>	Store-and-Forward
<b>LED operation indication</b>	Switch supplying; Link/Act; PoE Status
<b>Short circuit protection (SCP)</b>	electronic, automatic recovery
<b>Overload protection (OLP)</b>	150% - 200% PSU power, automatically recovered
<b>Power supply</b>	~100 – 240 V; 50/60 Hz; 0,6 A power supply desktop type PSCL520115 52 V DC / 1,15 A/60 W max.
<b>Fuse F<sub>MAINS</sub></b>	T3,15A/250V
<b>Operating conditions</b>	Temperature: -10°C ÷ +40°C, relative humidity 20%...90%, without condensation
<b>External dimensions</b>	W=146, H=196, D=78 [+/- 2 mm]
<b>Mounting dimensions</b>	W <sub>1</sub> =105, H <sub>1</sub> =155 [+/- 2 mm]
<b>Cable gland height</b>	H <sub>2</sub> =35 mm
<b>Dimensions of pressure compensator</b>	H <sub>3</sub> =9 [mm]
<b>Enclosure</b>	ABS, light grey
<b>Net/gross weight</b>	1,3 / 1,4 [kg]
<b>Protection class EN 62368-1</b>	I first
<b>Protection grade EN 60529</b>	IP56
<b>Storage temperature</b>	-25°C...+60°C
<b>Declarations, warranty</b>	CE, 1 year from production date
<b>Notes</b>	Possibility of pole mounting (requires the OZB2 adapter - optional accessory) PSCL520115 power supply desktop type 52 V DC/1,15 A/60 W max. a set includes

\* Given value of 30 W per port is the maximum value. The total power consumption should not exceed 30 W.



Example of installation

